

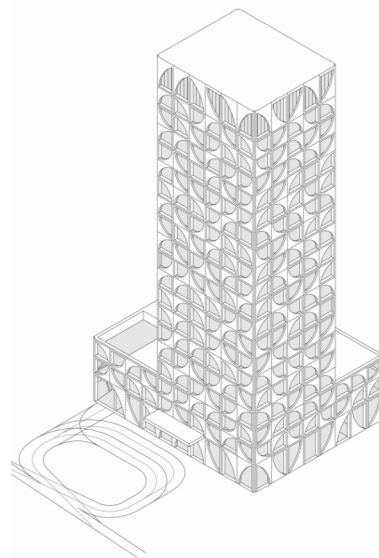
CAMPANILE MANGAF HOTEL KUWAIT KUWAIT CITY, KUWAIT 2018

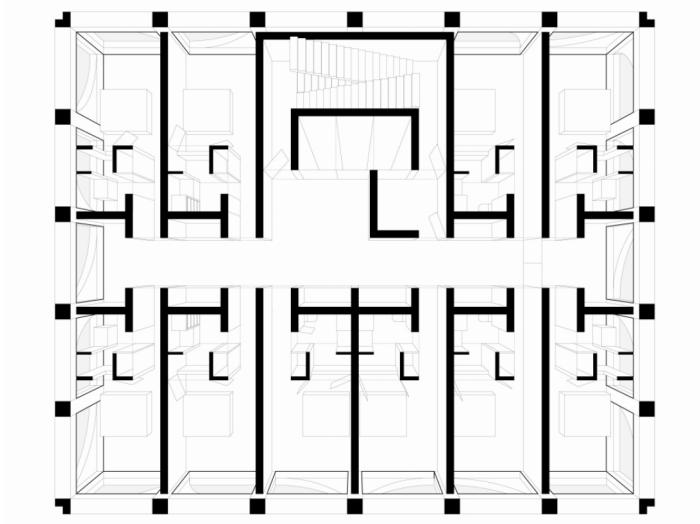
The site is a corner on the beachfront promenade of Al Mangaf, a residential district 35 km south of Kuwait City and 22 km from the International Airport. The programme comprises a city hotel for the former budget brand of Louvre hotels, Campanile, now in the process of being repositioned as a lifestyle city hotel.

Given the water table levels, the building has only one basement, plus 3-storey of deck parking above for a total of 70 cars, in compliance with city regulations. Back-of-house (BOH), servicing and loading areas are located in this basement. With double-height, the ground level includes reception, lobby-lounge and all-day dining. Meeting facilities are located on mezzanine and 1st-floor, comprising a function centre and meeting rooms, as well as the corresponding pre-function areas and restrooms.

On the 3rd-floor, there is a Spa and a health-club facility. The remaining 15 floors, out of a total of 18, are guestrooms, with the elevator core set against the east facade, and an average of 10 units per floor on a double-loaded corridor.

With a shaded facade in beige grc modules, shaped in a sort of stencil pattern of crescent variations, the design subtly evokes the founding period of the Kuwait's notable late-modern architecture of the 1970s, which recurrently used large-scale structural devises and sculptural graphics. Despite the functional simplicity of the ensemble, the building retains an iconic presence able to assert its public presence within the undifferentiated context.





Location: Al Mangaf District, Kuwait

Client: Dalia Trading Co.

Operator: Campanile (Louvre Hotel Group)

Architects-of-Record: Alhumaidhi Architects (w/ Ricardo Camacho, M.Arch.)

Scope of Services: Master planning, architecture, landscape architecture

Project Brief: City hotel with 172 keys and function centre

Plot Size: 1,843 sq. m

Gross Built Area: 10,000 sq. m

Construction Cost: kwd 3,1m (eur 8,3m)

Project Status: 2018 (concept design)