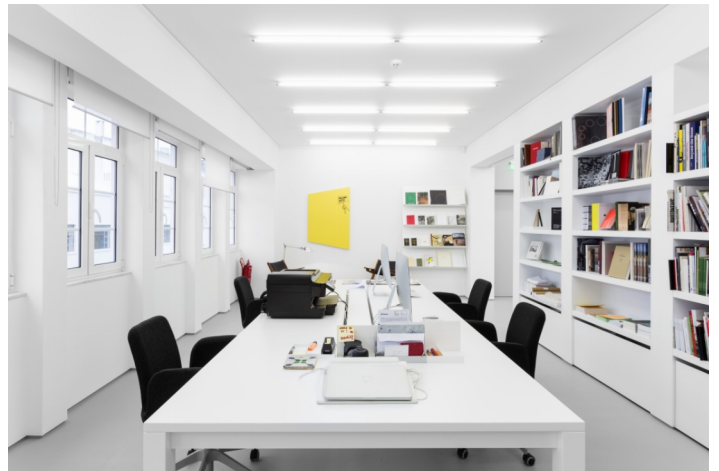
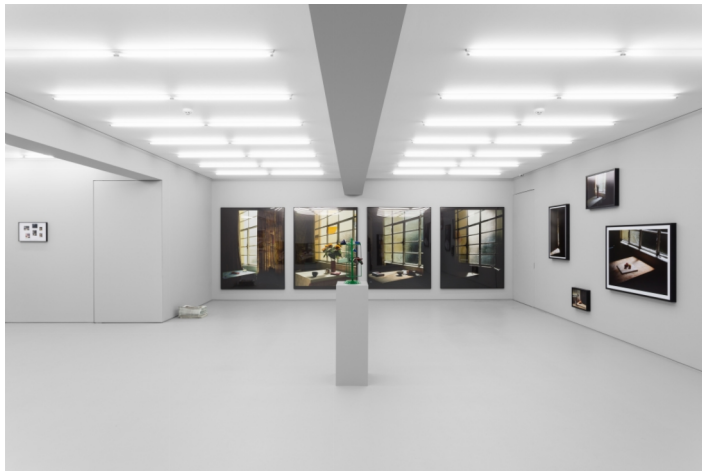


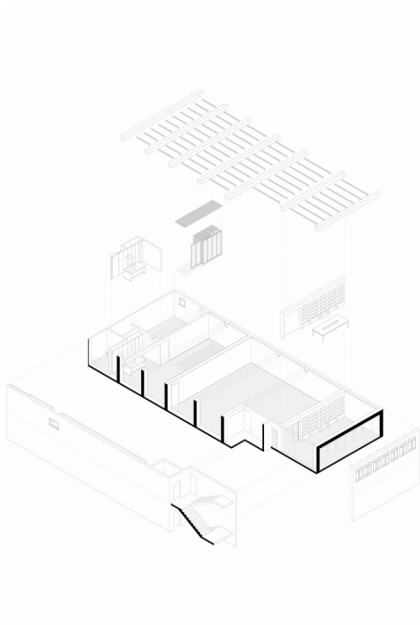
# PROMONTORIO

GALERIA VERA CORTES  
LISBON, PORTUGAL  
2017–2016

Galeria Vera Cortês is a Lisbon-based art gallery founded in 2006. The gallery is located on the 1<sup>st</sup>-floor of a stacked warehouse in Alvalade, Lisbon's quintessential modernist district, developed as the city planning paradigm of the *Estado Novo* regime.

With a single street frontage, the remainder of the space is a deep and almost windowless warehouse built in concrete in the late-1950s with large wall-to-wall beams. In terms of layout, offices are at the front, taking advantage of the abundance of light and using a customized co-working table. These are followed by the main exhibition room, separated from the offices by a wide pocket sliding door. Towards the back, there is a showroom with a meeting area and a kitchen isle, in addition to toilets and a storage room. When the photographs were taken, the artists in exhibition, Wood and Harrison, had requested that the main room be painted in a light warm grey.





Location: Rua João Saraiva 16-1º, Lisbon, Portugal

Client: Vera Cortês

Scope of Services: Interior design

Project Brief: Art gallery

Gross Built Area: 200 sq. m

Project Status: 2016 (design) – 2017 (completed)